

# HIKVISION

## Fever Screening Metal Detector Door Solution



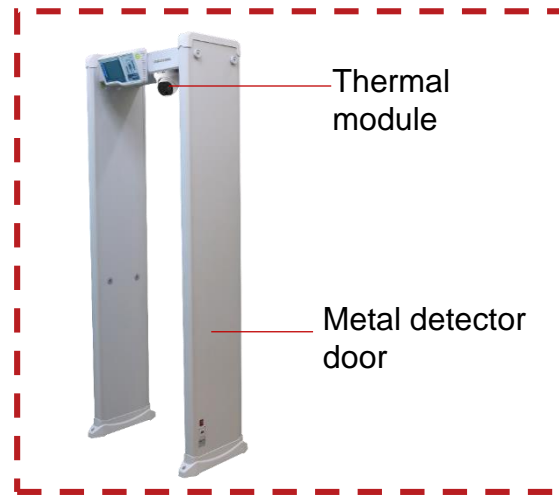
# Solution Introduction



# Solution Introduction

HIKVISION

## Hikvision fever screening metal detector door solution



### Advantages



Avoiding infected people entering



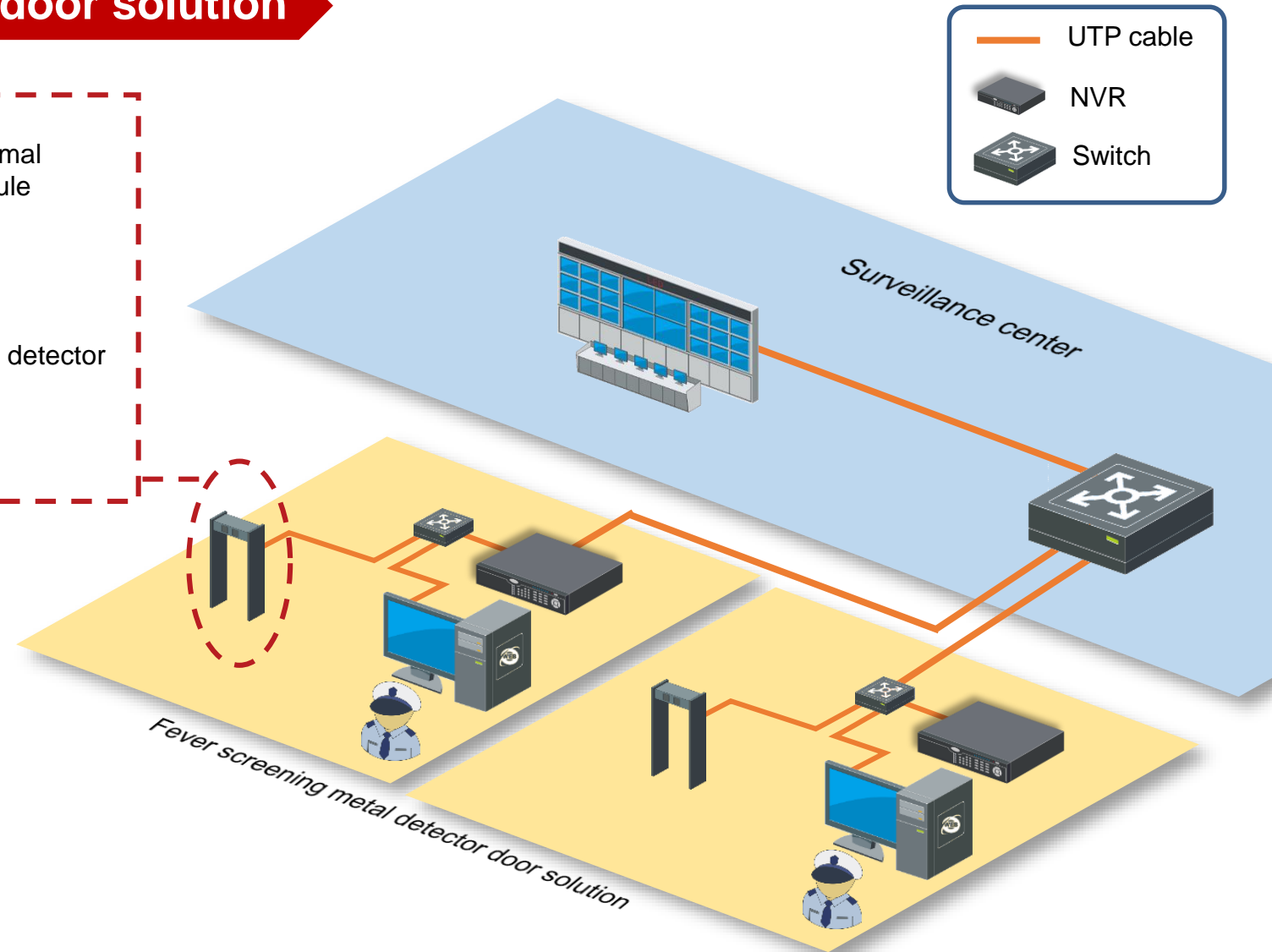
Touch-free fast accessing



Suitable for various scenarios



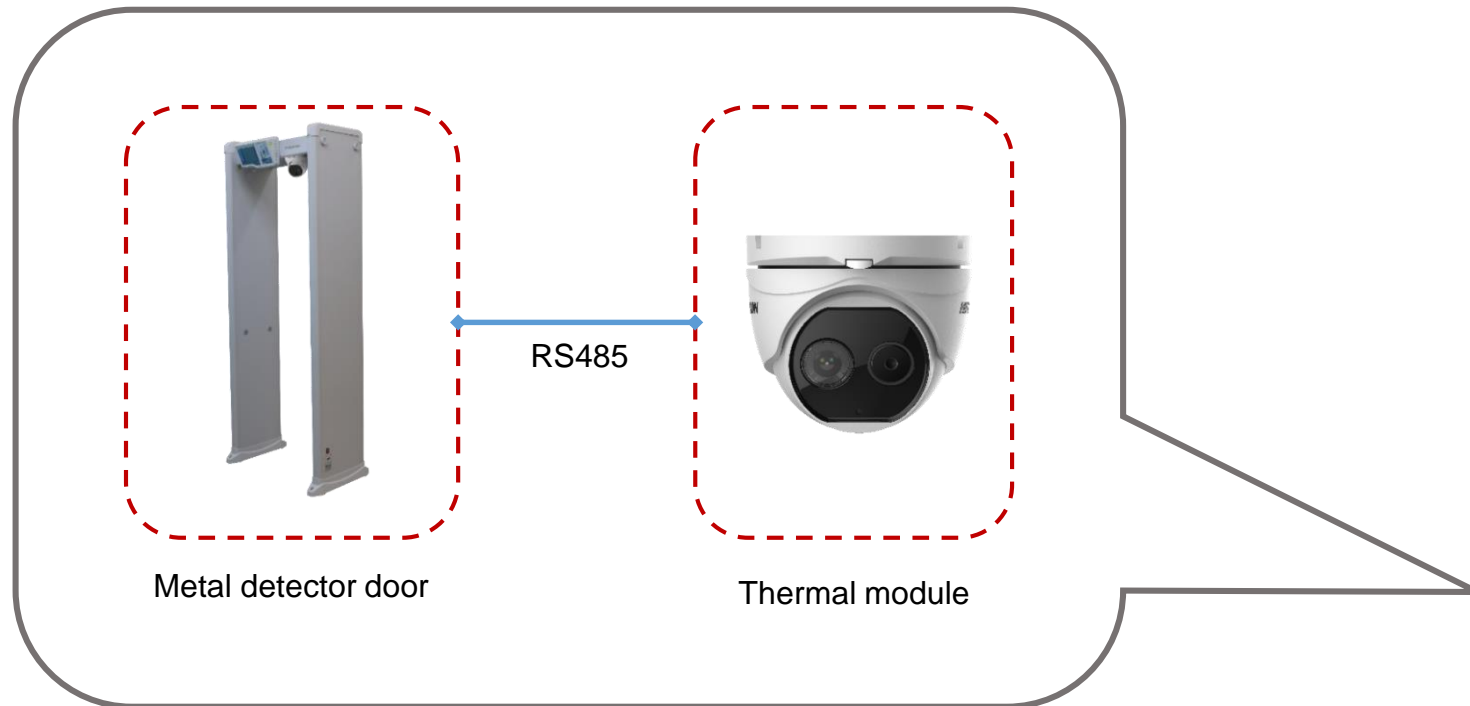
Reducing human resources cost



# Solution Introduction

HIKVISION®

## Solution topology diagram



Management Center



NVR



UTP

UTP

Local Area Network(TCP/IP)

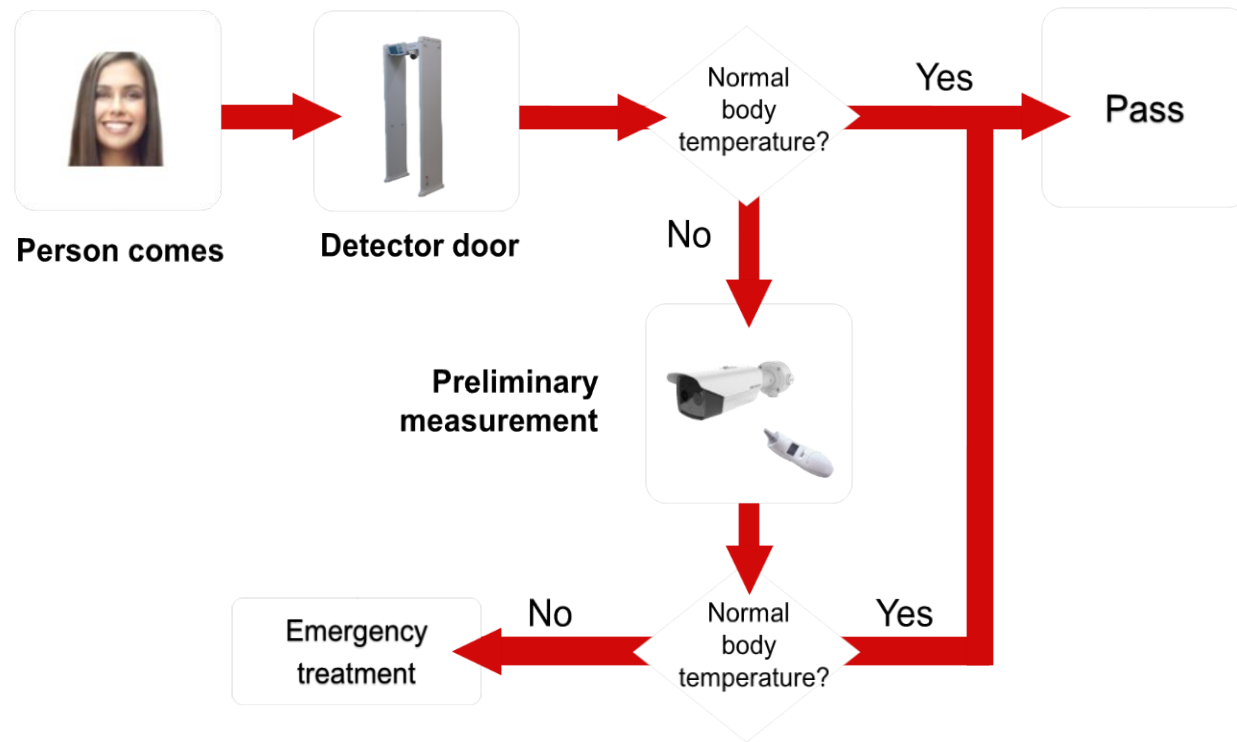


Fever screening metal detector door solution

# Solution Introduction

HIKVISION

## Working flow & results display





# Solution Introduction

## Solution advantages

### Touch-free, fast fever screening

- Hygiene - indirect touching can be avoided
- Convenient – information displayed on LCD
- Long distance verification & measurement

### High adaptability

- Suitable for various indoor scenarios
- Easy installation & configuration



### High security

- Fever screening - avoiding disease infected people entering
- Metal detecting – indicating location of metal

### Centralized management

- Combining temperature data and people counting statistics for easy management and query

# Solution Introduction

**HIKVISION**

## Solution ordering notes

### Fever screening metal detector door



- Model name: NP-SG318LT-F
- Metal detector door and thermal camera all-in-one

### Thermal camera



- Model name: DS-2TD1217B-3/PA(B)



# Products Introduction



# Products Introduction - Highlights

HIKVISION

## Fever screening metal detector door

### Statistics

People counting, metal alarms counting, people with abnormal temperature, etc.



### Metal detector

Detecting metals small to clips.



### Multi-zone alarm

18 independent detection zones.



NP-SG318LT-F



### High reliability & good quality

Modular design of door body.



### Dedicated for fever screening

Temperature range: 30 °C to 45 °C.



### High accuracy

Temperature accuracy: : ±0.5 °C.



### LCD display

Real-time display of statistics and body temperature.

# Products Introduction - Highlights

HIKVISION

## Body temperature measurement camera

### High sensitivity sensor

160 × 120 resolution in thermal channel.



### Enhanced image quality

Provide 3D Digital Noise Reduction to guarantee enhanced details of image.



### Comprehensive alarm function

Strobe light and audio alarm supported.



DS-2TD1217B-3/PA(B)



### Dedicated for fever screening

Temperature range: 30 °C to 45 °C.



### High accuracy

Temperature accuracy: : ±0.5 °C.



# Products Introduction - Brief Datasheet



Device Model	SAP Code	Description	Picture
NP-SG318LT-F	Standard : 3153100145	<ul style="list-style-type: none"><li>• 18 independent detection zones;</li><li>• LCD screen;</li><li>• Thermal imaging resolution : 160*120</li><li>• Temperature measurement accuracy : <math>\pm 0.5^{\circ}\text{C}</math></li><li>• Temperature measurement range : 30-45<math>^{\circ}\text{C}</math></li><li>• Video mode: Bi-spectrum image fusion;</li><li>• In accordance with the international safety standard, friendly to pregnant woman, people with cardiac pacemaker, etc.</li></ul>	A white, vertical, wall-mounted thermal imager with a small LCD screen at the top.
DS-2TD1217B-3/PA(B)	Standard : 305401146 Neutral : 305401150	<ul style="list-style-type: none"><li>• Thermal: 160 <math>\times</math> 120; Lens: 3mm;</li><li>• Optical: 2688 <math>\times</math> 1520; Optical lens: 4mm;</li><li>• Video mode: Bi-spectrum image fusion;</li><li>• Accuracy: <math>\pm 0.5^{\circ}\text{C}</math>;</li><li>• Range: 30-45<math>^{\circ}\text{C}</math>;</li><li>• Audio alarm support.</li></ul>	A white, dome-shaped thermal camera with a black lens and a small display on the side.





# Application Scenarios

# Application Scenarios

**HIKVISION**

**Entrance of airports**



**Entrance of schools**



**Entrance of hospitals**



**Entrance of shopping malls**

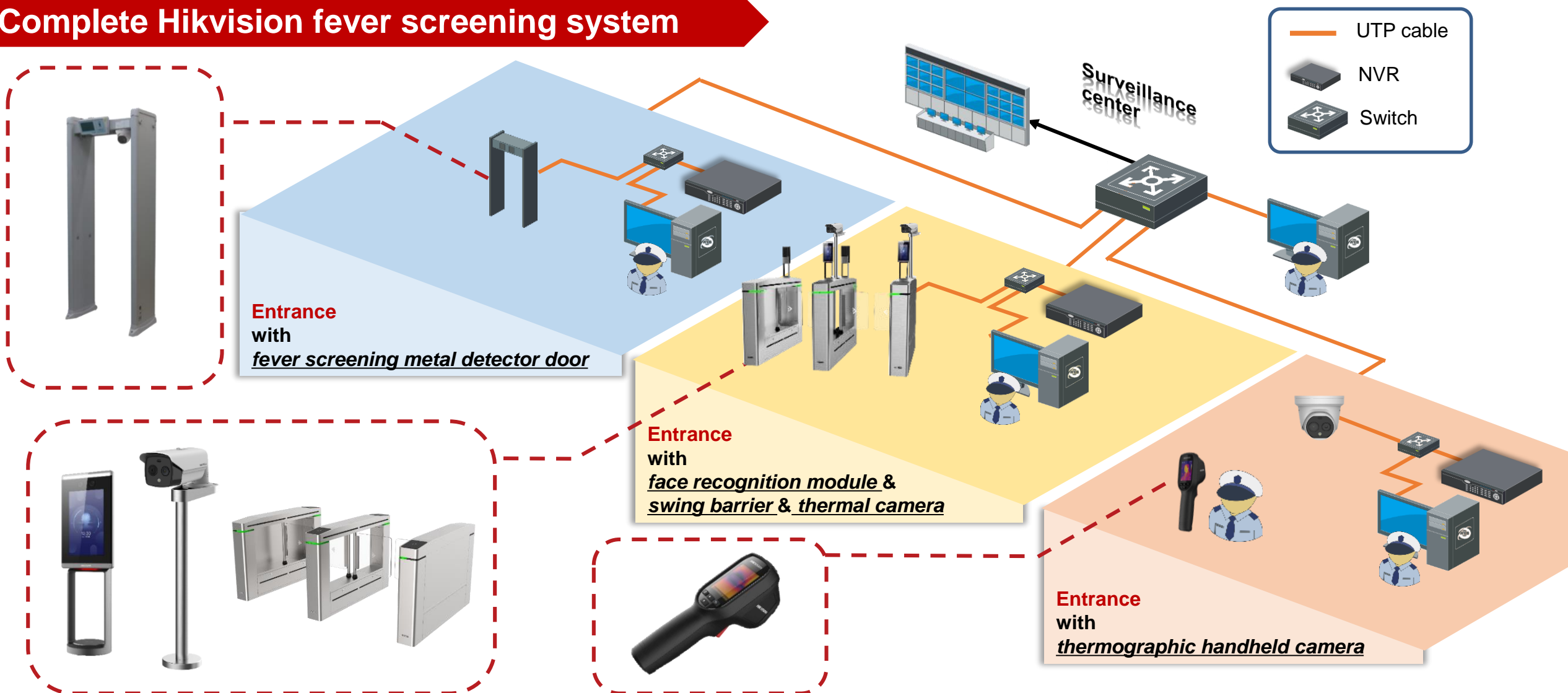
*Note: Indoor installation is recommended for accuracy of temperature measurement.*



# Application Scenario

HIKVISION

## Complete Hikvision fever screening system







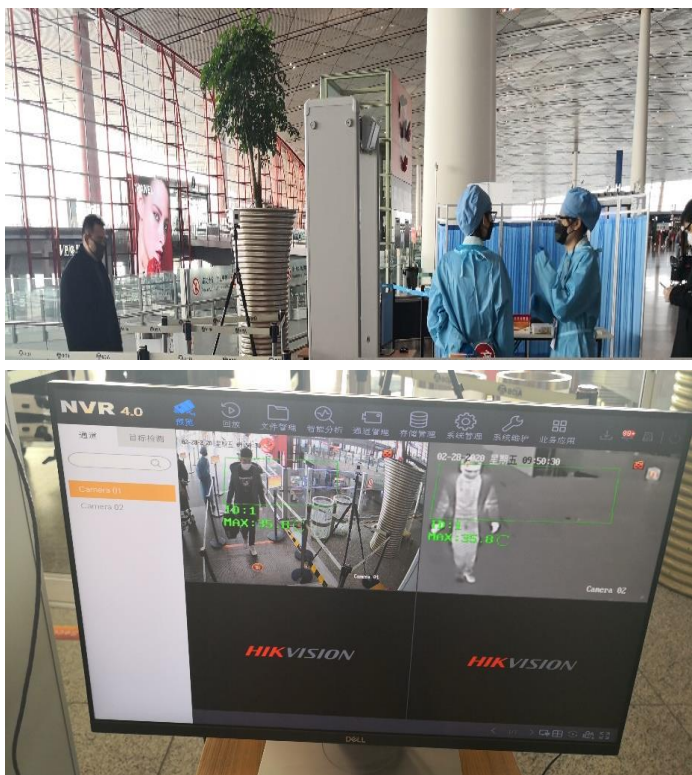
# Case Study



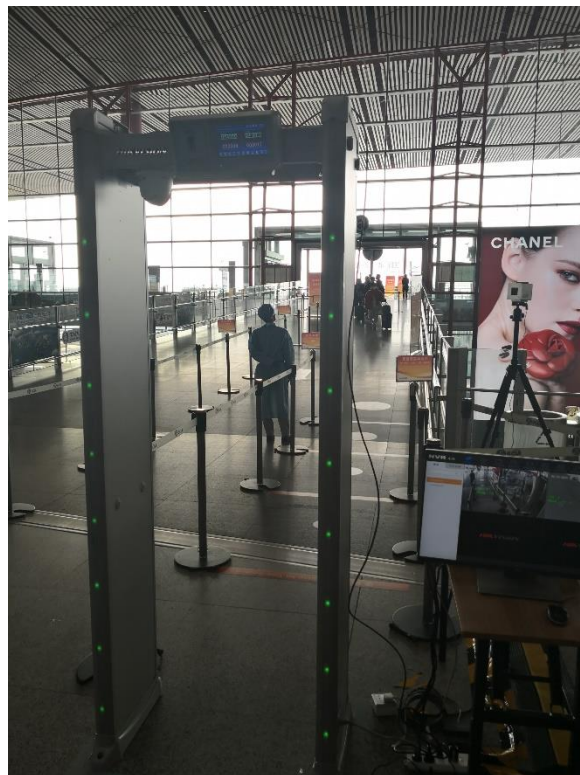
# Case Study

HIKVISION®

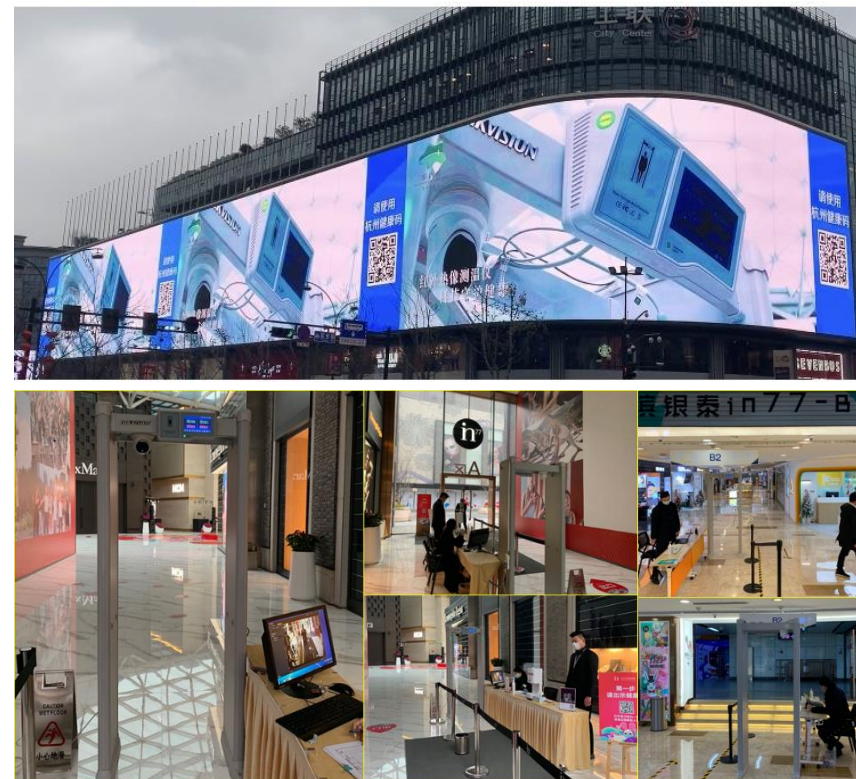
## Projects in airports and shopping malls



Beijing capital international airport project, Beijing



West lake Yintai shopping mall project, Hangzhou





# Case Study

HIKVISION®

## Projects in hospitals and universities



Peking university people's hospital project, Beijing



Fudan University project, Shanghai



# Thanks

See far, go further